



The Broadway
Wimbledon
London
SW19 1QG

Technical Specifications

Updated August 2010

STAGE

The studio is designed to use in multiple formats and the standard format is a black box consisting of 12 black serge drapes that are hung on track around the room. The drapes also form an integral part of the studio's acoustics.

The floor is hardboard painted black and laid on top of a beech dance floor so screwing into the floor must be done at the in-house technician's discretion only. The floor may **not** be painted and any fixings to the floor must be made good before the end of your get out.

No exposed walls may be painted or have any set attached to it.

At all times during your visits all the fire exits must be kept clear.

THE STAGE AREA (APPROX)

In the end format at 53 seats	:	6.7m x 6.5m to tab track
In the end format at 80 seats	:	6.7m x 2.8m to tab track
In the L format at 63 seats	:	4.9m x 7.2m to tab track
In the L format at 73 seats	:	4.9m x 5.6m to tab track
Height of lighting grid:	:	3.6m 12'

ACCESS

Access to the studio is via the fire exit at the rear of the building (CAR PARK OFF THE BROADWAY). The entrance to the car park is via Russell Road.

There are 2 flights of steps from the fire exit to the studio space

Width of outside doors	:	1.02m
Height of outside doors	:	2.10m

A lift is available front of house if there are any boxes that are particularly heavy.

ACCOMMODATION

There is 1 dressing room / Green room available for your use. Within this area are toilets and shower facilities. There is direct access to the stage and bar areas but none to the foyer area.

PIANO

1 x Yamaha upright piano

If you wish this to be tuned you do so at your own expense

LIGHTING CONTROL

- 1 x ETC Element Lighting Desk with operator's manual (control area)
- 8 x Act 6 dimmer units (Dimmer room located in the public staircase FOH)

The lighting system consists of 48 dimmers fed through a patchable system of 60 15A socket-outlets. The dimmers are powered on 100A 3PN supply with a maximum loading of 32A per dimmer rack and 10A per channel of a dimmer rack.

LIGHTING EQUIPMENT

Standard LX rig: -

- 12 x 1.2K ADB Fresnels
 - 5 x 575w Source 4 Junior Profiles 25/50
 - 4 x 500w Coda floods (must be used for houselights)
- In stock we also hold an assortment of barndoors and 'm' size gobo holders

Extra Lighting Equipment is available on request subject to availability

The standard lighting rig must be reinstated, plugged up and flashed out on your get out, if this is not completed a charge will be made.

THE SOUND SYSTEM

- 4 x Speakers (rigged on lighting trusses)
- 1 x Soundcraft Mixing Desk (12 channels, 2 stereo channels and 2 outputs)
- 1 x CD Player
- 1 x Mini Disc Player

Extra equipment available on request subject to availability

SHOW COMMUNICATION

There is a backstage and front of house speaker system, which is operated from the control position; this also incorporates the show relay system that is feed from a microphone hung from the ceiling above the studio space.

There is also a 4 way cue light system again operated from the control room, with outlets situated in the backstage corridor, the bar, foyer and upstage right.
A Resident Technician is available for a limited amount of time during your get-in. The length of time available to you will be detailed on your contract. Sundays and Bank Holidays attract double time halving technical staff availability. Should the total hours worked by the Resident Technician exceed that specified then the excess will be charged to you.

If you require a Technician to run and operate for performances or for your get-out you will be charged on the contra at the prevailing rates.

IF YOU HAVE ANY FURTHER TECHNICAL QUERIES PLEASE CONTACT:

STUART GRAHAM - TECHNICAL MANAGER

ON:- Tel: 020 8545 7921
Fax: 020 8543 6637
E-mail <mailto:stuartgraham@theambassadors.com>

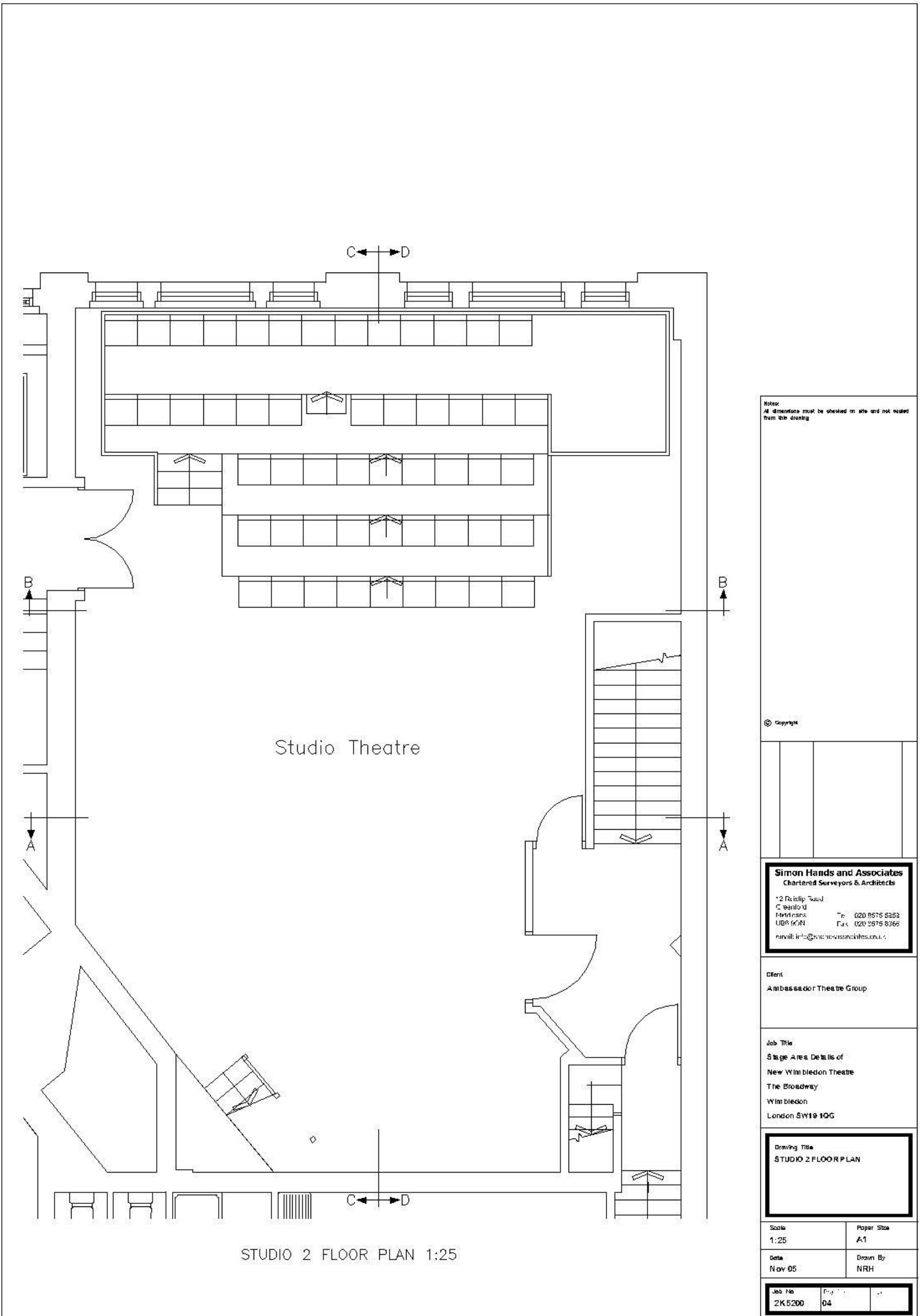
OR:- MIG WALSH - CHIEF ELECTRICIAN

ON:- Tel: 020 8545 7914
E-mail <mailto:wimbledonchieflex@theambassadors.com>

AND CHRIS BUFFHAM - STAGE MANAGER

ON:- Tel: 020 8545 7920
E-mail <mailto:wimbledonstageman@theambassadors.com>

PLEASE NOTE: The plans on the following pages are NOT TO SCALE



Notes:
 All dimensions must be checked on site and not relied
 from this drawing

© Copyright

Simon Hands and Associates
 Chartered Surveyors & Architects
 12 Rutledge Road
 C. Wallingford
 Oxon OX10 9JN
 Tel: 020 8575 5353
 Fax: 020 8575 8365
 email: info@simonhands.co.uk

Client:
 Ambassador Theatre Group

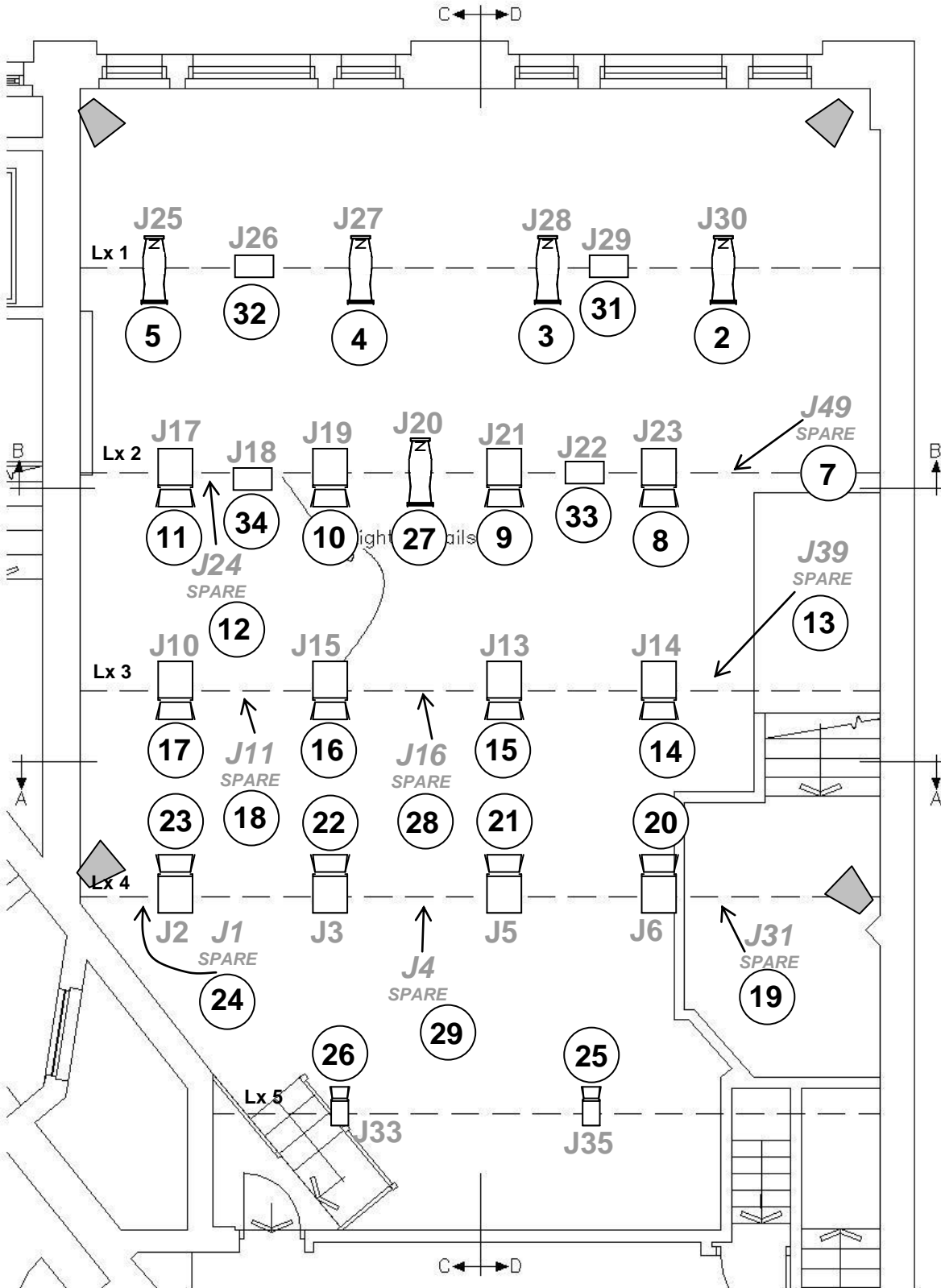
Job Title:
 Stage Area Details of
 New Wimbledon Theatre
 The Broadway
 Wimbledon
 London SW18 1QG

Drawing Title:
 STUDIO 2 FLOOR PLAN


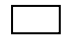
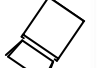




Scale 1:25	Paper Size A1
Date Nov 05	Drawn By NRH
Job No 2K5200	Page No 04

NWT Studio Standard LX Rig (NOT TO SCALE)

All spare jumper ways are marked with green Lx tape.
 These TRS ways are not to be removed



Note:
 All dimensions must be checked on site and not relied on from this drawing.

- Source 4 Junior Zoom (Blue Marks) 
- Coda 1 (Yell Marks) 
- ADB 1.2k Fresnel (Red Marks) 
- CCT 650w Fresnel (Red Marks) 
- Speaker 
- TRS Rig Patch Number  J23
- Desk Channel Number  8

© Copyright

Simon Hands and Associates
 Chartered Surveyors & Architects

12 Rye Slip Road
 Greenwich
 Middlesex
 URB 600N In: 020 8575 5656
 Fax: 020 8675 8862
 Email: info@simonhandsassociates.co.uk

Client
 Ambassador Theatre Group

Job Title
 Stage Area Details of
 New Wilmbleton Theatre
 The Broadway
 Wilmbleton
 London SW19 1QG

Drawing Title
 STUDIO 2 LIGHTING GRID PLAN

Scale 1:25	Paper Size A1
Date Nov 05	Drawn By NRH

Job No 2KB200	Page 05	Total 10
------------------	------------	-------------

STUDIO 2 LIGHTING GRID PLAN 1:25