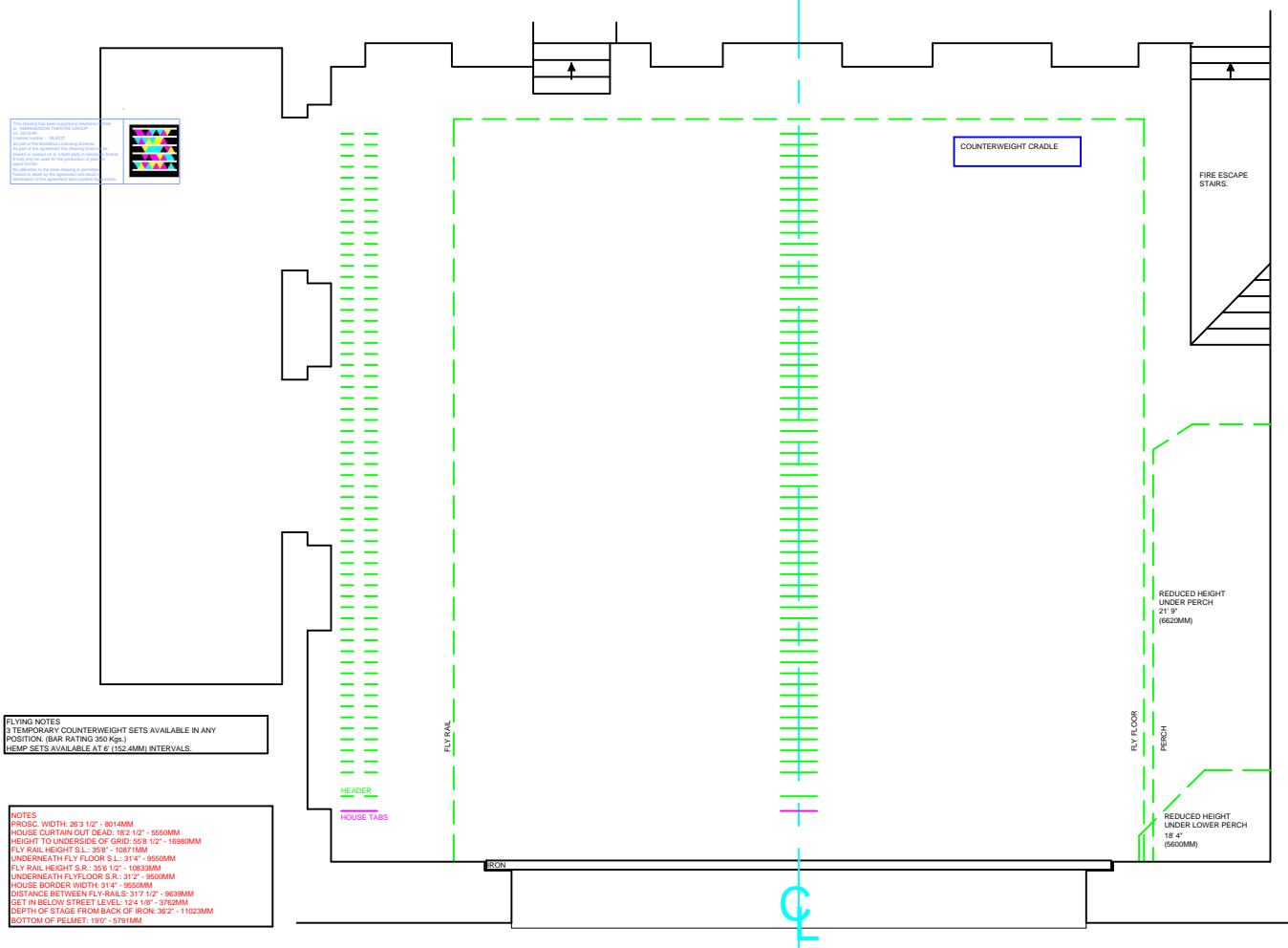


THIS COMPUTER DRAWING IS BASED ON DRAWINGS NOT PREPARED BY MODELBOX. MODELBOX DOES NOT ACCEPT ANY LIABILITY FOR DIRECT OR CONSEQUENTIAL LOSS OR DAMAGE ARISING FROM ERRORS OR INACCURACIES IN THIS COMPUTER DRAWING HOWSOEVER CAUSED AND WHETHER THE RESULT OF NEGLIGENCE OF MODELBOX, ITS SERVANTS OR OR AGENTS. USERS INTENDING TO RELY ON THIS COMPUTER DRAWING SHOULD INDEPENDENTLY CHECK THE ACCURACY THEREOF.



FLYING NOTES  
 3 TEMPORARY COUNTERWEIGHT SETS AVAILABLE IN ANY POSITION. (BAR RATING 350 Kgs.)  
 HEMP SETS AVAILABLE AT 6" (152.4MM) INTERVALS.

NOTES  
 PROSC. WIDTH: 263 1/2" - 8014MM  
 HOUSE CURTAIN OUT DEAD: 18'2 1/2" - 5550MM  
 HEIGHT TO UNDERBITE OF GRID: 55'8 1/2" - 16980MM  
 FLY RAIL HEIGHT S.L.: 35'3" - 10871MM  
 UNDERNEATH FLY FLOOR S.L.: 31'4" - 9550MM  
 FLY RAIL HEIGHT S.R.: 35'6 1/2" - 10833MM  
 UNDERNEATH FLY FLOOR S.R.: 31'2" - 9500MM  
 HOUSE BORDER WIDTH: 31'4" - 9550MM  
 DISTANCE BETWEEN FLY RAILS: 31'7 1/2" - 9639MM  
 SET IN BELOW STREET LEVEL: 12'4 1/8" - 3762MM  
 DEPTH OF STAGE FROM BACK OF IRON: 36'2" - 11023MM  
 BOTTOM OF PELMET: 19'0" - 5791MM

