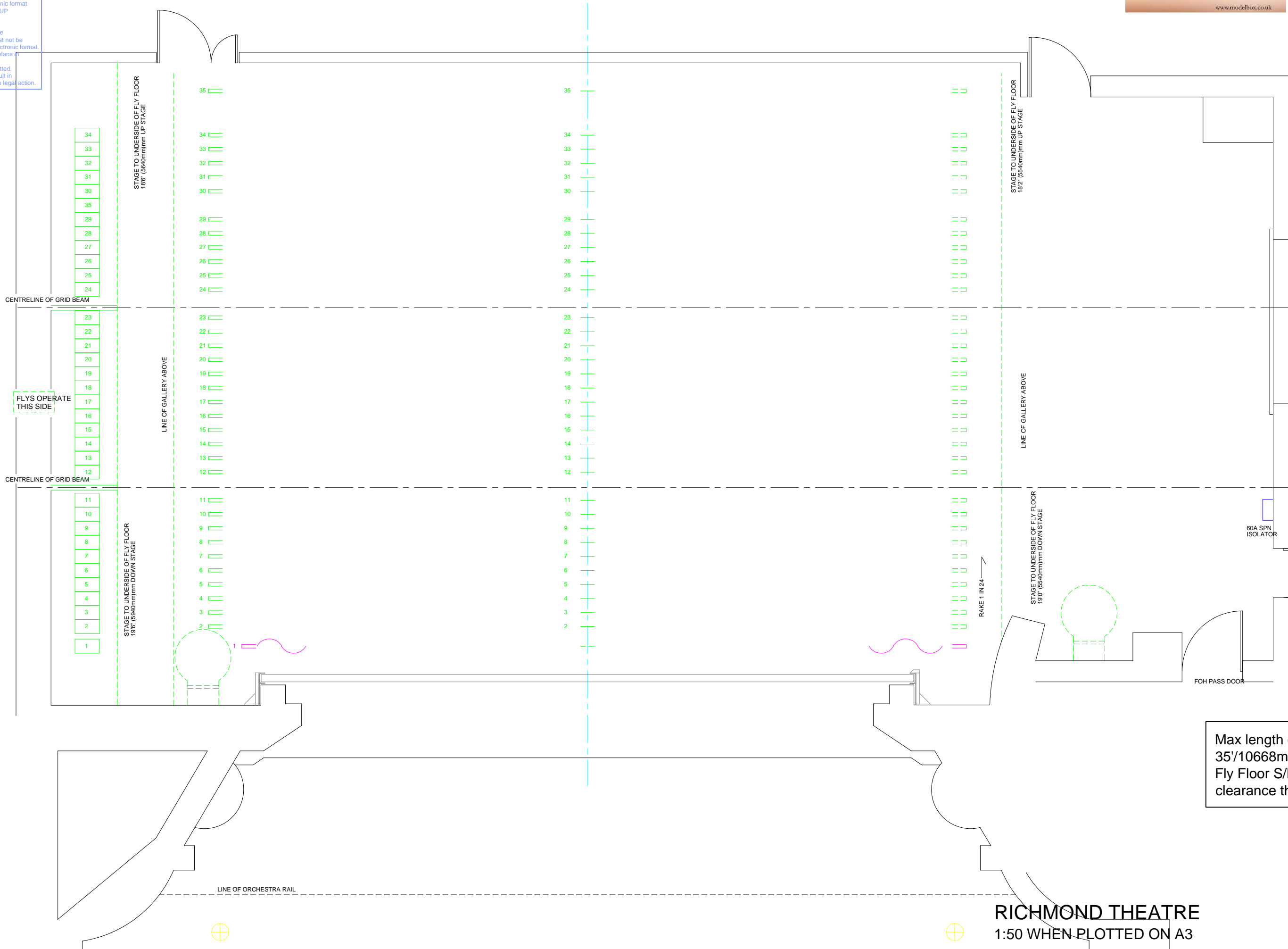


THIS COMPUTER DRAWING IS BASED ON DRAWINGS NOT PREPARED BY MODELBOX. MODELBOX DOES NOT ACCEPT ANY LIABILITY FOR DIRECT OR CONSEQUENTIAL LOSS OR DAMAGE ARISING FROM ERRORS OR INACCURACIES IN THIS COMPUTER DRAWING HOWSOEVER CAUSED AND WHETHER THE RESULT OF NEGLIGENCE OF MODELBOX, ITS SERVANTS OR OR AGENTS. USERS INTENDING TO RELY ON THIS COMPUTER DRAWING SHOULD INDEPENDENTLY CHECK THE ACCURACY THEREOF.

This drawing has been supplied in electronic format to THE AMBASSADOR THEATRE GROUP on 3/11/09 License number - MLS027 as part of the Modelbox Licensing Scheme. As part of the agreement this drawing must not be shared or passed on to a third party in electronic format. It may only be used for the production of plans in paper format. No alteration to the base drawing is permitted. Failure to abide by the agreement will result in termination of the agreement and possible legal action.

- 35
- 34
- 33
- 32
- 31
- 30
- 29
- 28
- 27
- 26
- 25
- 24
- 23
- 22
- 21
- 20
- 19
- 18
- 17
- 16
- 15
- 14
- 13
- 12
- 11
- 10
- 9
- 8
- 7
- 6
- 5
- 4
- 3
- 2



Max length of  
 35'/10668mm  
 Fly Floor S/L  
 clearance that

**RICHMOND THEATRE**  
 1:50 WHEN PLOTTED ON A3

