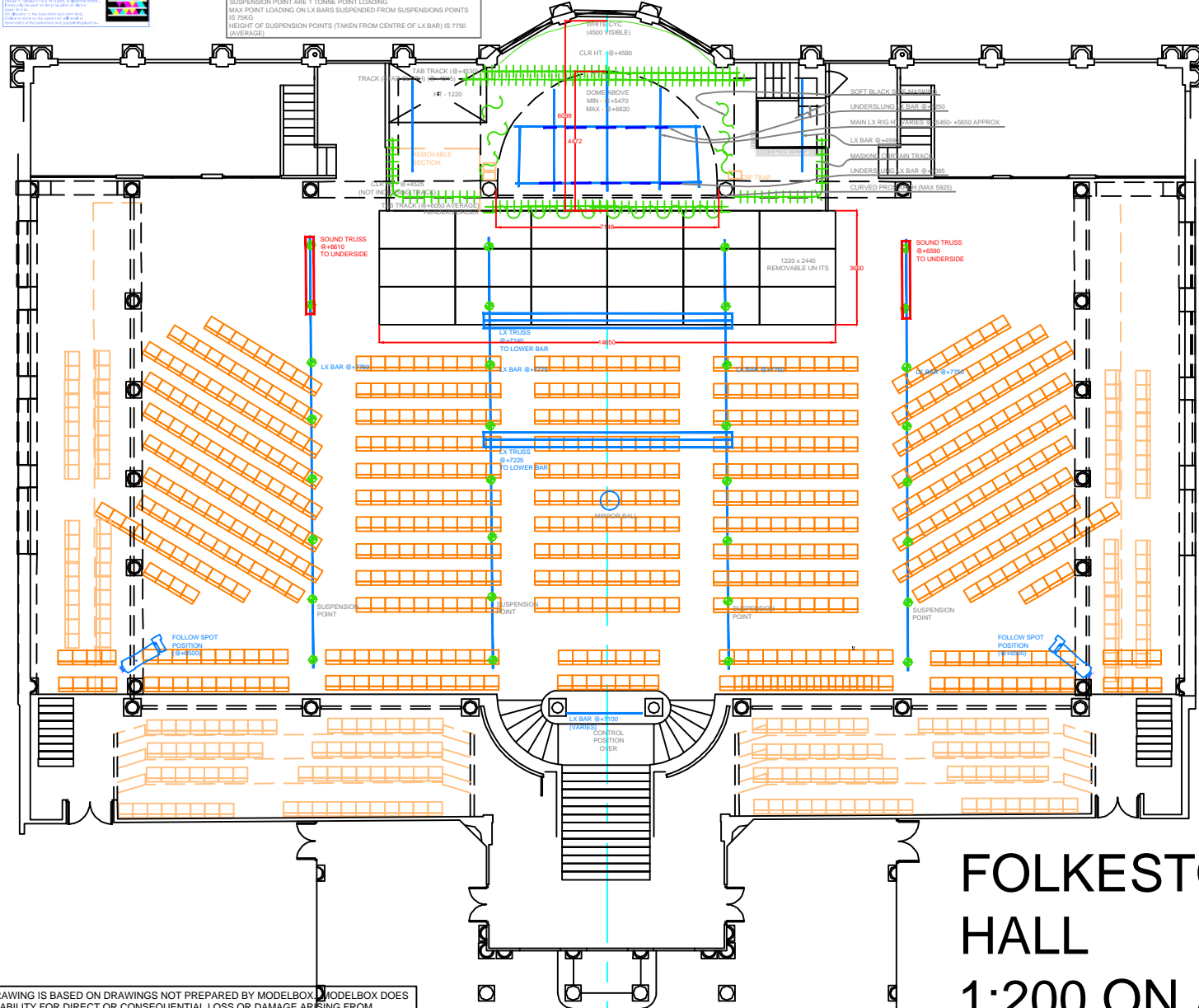


The drawing is based on drawings prepared by [unreadable] and is not to be used for any other purpose without the written consent of Modelbox Plans. Modelbox Plans is not responsible for any errors or omissions in this drawing. Users intending to rely on this drawing should independently check the accuracy thereof.

ALL HEIGHT MEASUREMENTS ARE TAKEN FROM ROOM FLOOR LEVEL  
 HEIGHT OF STAGE IS 1050 (+300)  
 ROOM FLOOR VARIES ±25  
 SUSPENSION POINT ARE 1 TONNE POINT LOADING  
 MAX POINT LOADING ON LX BARS SUSPENDED FROM SUSPENSIONS POINTS IS 75KG  
 HEIGHT OF SUSPENSION POINTS (TAKEN FROM CENTRE OF LX BAR) IS 7750 (AVERAGE)



THIS COMPUTER DRAWING IS BASED ON DRAWINGS NOT PREPARED BY MODELBOX. MODELBOX DOES NOT ACCEPT ANY LIABILITY FOR DIRECT OR CONSEQUENTIAL LOSS OR DAMAGE ARISING FROM ERRORS OR INACCURACIES IN THIS COMPUTER DRAWING HOWSOEVER CAUSED AND WHETHER THE RESULT OF NEGLIGENCE OF MODELBOX, ITS SERVANTS OR OR AGENTS. USERS INTENDING TO RELY ON THIS COMPUTER DRAWING SHOULD INDEPENDENTLY CHECK THE ACCURACY THEREOF.

# FOLKESTONE LEAS CLIFF HALL

## 1:200 ON A4