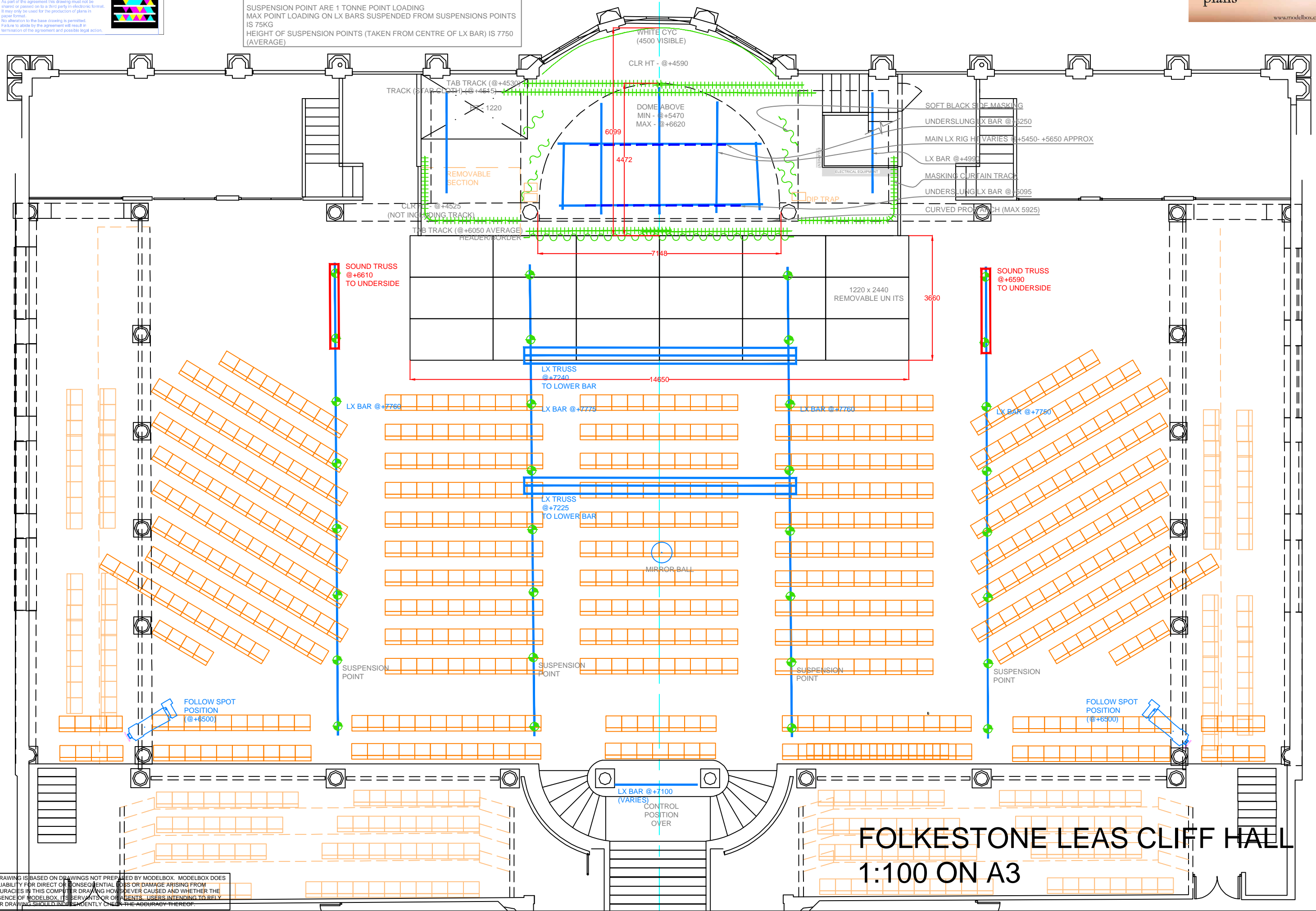


This drawing has been supplied in electronic format to AMBASSADOR THEATRE GROUP on 20/01/17
 License number - ML5027
 as part of the Modelbox Licensing Scheme
 No part of the agreement this drawing must not be shared or passed on to a third party in electronic format. It may only be used for the production of plans in paper format.
 No alteration to the base drawing is permitted.
 Failure to abide by the agreement will result in termination of the agreement and possible legal action.

ALL HEIGHT MEASUREMENTS ARE TAKEN FROM ROOM FLOOR LEVEL
 HEIGHT OF STAGE IS 1060 (±20)
 ROOM FLOOR VAIRES ±25

SUSPENSION POINT ARE 1 TONNE POINT LOADING
 MAX POINT LOADING ON LX BARS SUSPENDED FROM SUSPENSIONS POINTS IS 75KG
 HEIGHT OF SUSPENSION POINTS (TAKEN FROM CENTRE OF LX BAR) IS 7750 (AVERAGE)



FOLKESTONE LEAS CLIFF HALL
1:100 ON A3

THIS COMPUTER DRAWING IS BASED ON DRAWINGS NOT PREPARED BY MODELBOX. MODELBOX DOES NOT ACCEPT ANY LIABILITY FOR DIRECT OR CONSEQUENTIAL LOSS OR DAMAGE ARISING FROM ERRORS OR INACCURACIES IN THIS COMPUTER DRAWING HOWSOEVER CAUSED AND WHETHER THE RESULT OF NEGLIGENCE OF MODELBOX, ITS SERVANTS OR OTHER AGENTS. USERS INTENDING TO RELY ON THIS COMPUTER DRAWING SHOULD INDEPENDENTLY CHECK THE ACCURACY THEREOF.